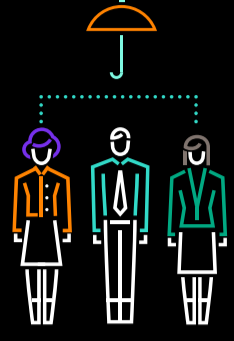


HELPING BUSINESSES RETURN TO WORK



A DRAMATICALLY DIFFERENT WORKPLACE AWAITS

As many stay-at-home orders begin to expire, you're confronted with the complexities of returning your employees to work in a manner that's safe and ensures business continuity.

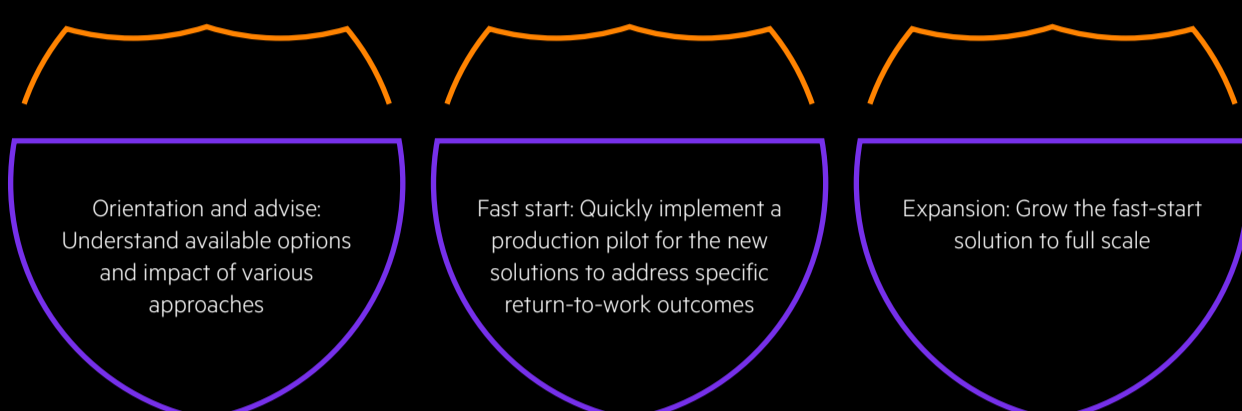
BEGIN YOUR RETURN TO WORK CONVERSATION WITH HPE POINTNEXT SERVICES

The HPE Pointnext Services return to work program leverages a series of IoT-based solutions targeting social-distance tracing and tracking, fever detection, location-based alerts, and more to help you create a safe work environment for your employees.

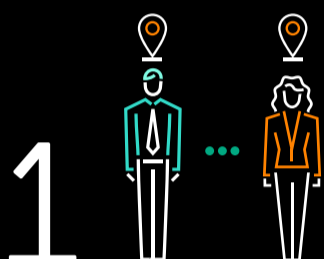
HPE can assist customers with the assessment and deployment of these solutions in compliance with their privacy, security, and other regulatory compliance requirements.



A FRAMEWORK FOR SAFE RETURN TO WORK AMID MOUNTING DISRUPTION



RECONFIGURE YOUR WORKPLACE FOR SAFE DISTANCING WITH FIVE KEY HPE SOLUTIONS



1 SOCIAL-DISTANCE TRACING AND TRACKING

- Implement and manage social-distancing guidelines in physical locations with three solutions:
 - Proximity alerting: Alarm and alert if employees are not complying with social-distancing guidelines
 - Location tracking: Determine locations of specific employees
 - Contact tracing: Determine the contact and proximity history of individual employees
- Well-defined architecture leveraging video analytics, Bluetooth® Low Energy (BLE), and other technologies
- Joint offerings with our ecosystem of partners



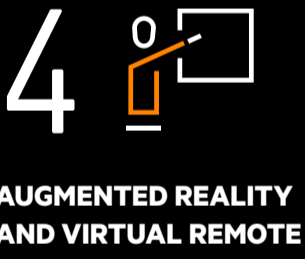
2 TOUCHLESS ENTRY

- Create a hygienic, low-congestion mechanism for employees to securely and smoothly enter a location with three solutions:
 - Contactless access
 - Multifactor access control
 - Identity verification
- Distinct offerings using video analytics and other technologies
- Joint offerings with our ecosystem of partners



3 FEVER DETECTION

- Create a non-intrusive, low-touch mechanism for detecting and tracing body temperature
- Solution leverages thermal cameras
- Joint offerings with our ecosystem of partners



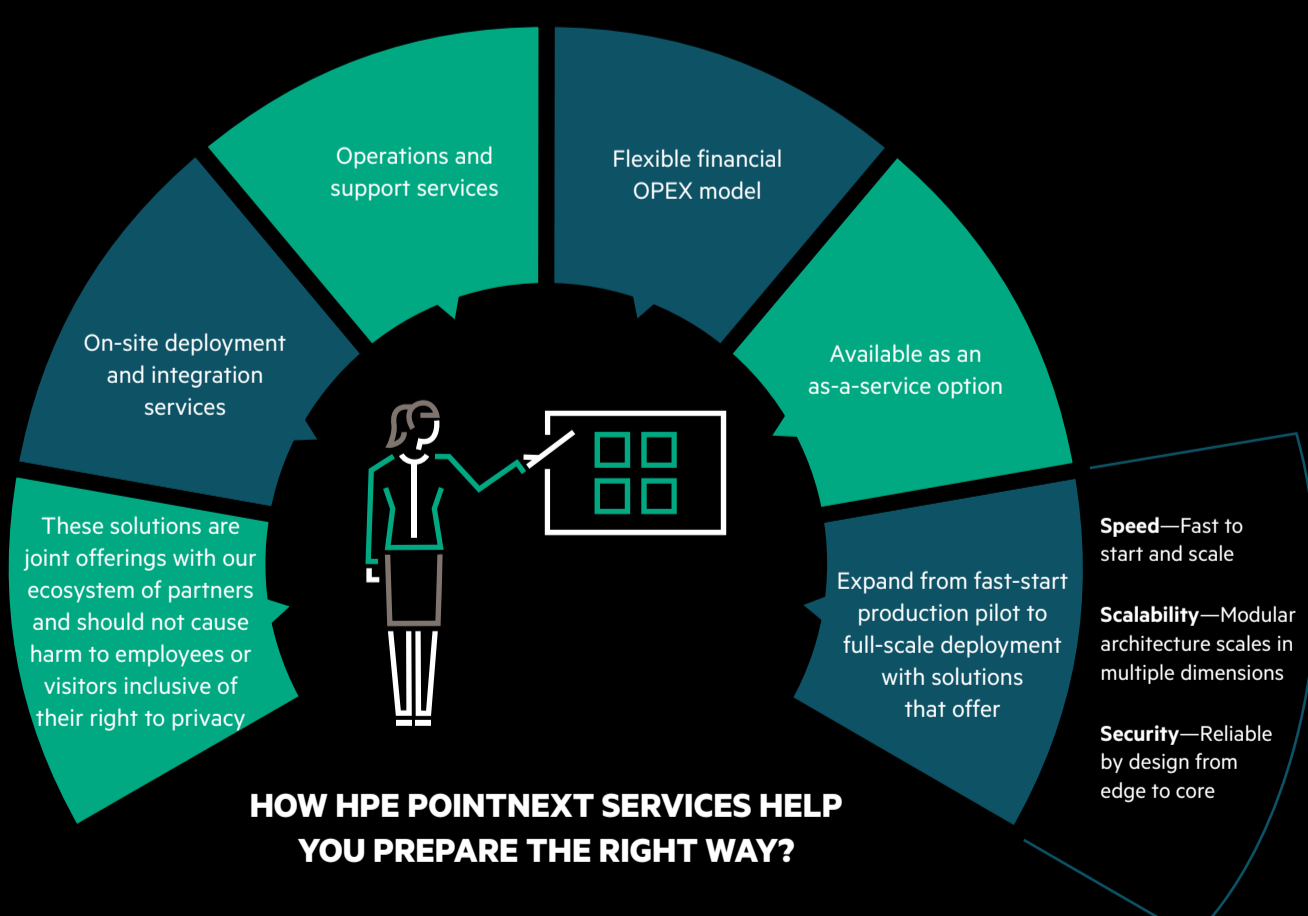
4 AUGMENTED REALITY AND VIRTUAL REMOTE GUIDANCE

- Empower employees with remote expert assistance through augmented reality (AR) capabilities and virtual remote guidance
- Collaborate effectively with remote employees to undertake complex maintenance operations such as troubleshooting a gas valve
- Two distinct working solutions: An AR solution in a partnership with HPE Visual Remote Guidance (VRG) solution—a secure, enterprise-ready collaboration solution using live, visually-guided interactive sessions with extended teams
- Joint offerings with our ecosystem of partners



5 WORKPLACE ALERTS AND INFORMATION SHARING

- Share workplace information and push alerts to employees in a specific building location using apps and dashboards
- Part of Intelligent Workplace as a service delivered by HPE Pointnext Services
- Caters to standalone requirements for an app and dashboard for information sharing in a given location
 - Deployed remotely; includes several employee engagement tools such as site news, notifications, and more
 - One-stop shop for resources with simple links to key information and corporate/wellness apps
- Joint offerings with our ecosystem of partners



Helping your employees return to work safely and worry-free amid the current health crisis is no mean feat. Start with a framework from HPE Pointnext Services comprising operational solutions to promote effective health and social-distancing practices. The services we deliver around these solutions is inclusive of working with security team and legal team of our customers to ensure compliance to any policies inclusive privacy concerns.

To learn how HPE technology and teams are helping customers and communities combat the current health crisis, visit [HPE COVID-19 response](https://www.hpe.com/us/en/solutions/business-continuity.html).

LEARN MORE AT

[hpe.com/us/en/solutions/business-continuity.html](https://www.hpe.com/us/en/solutions/business-continuity.html)

SHARE

